



# BEST GRAPHICS

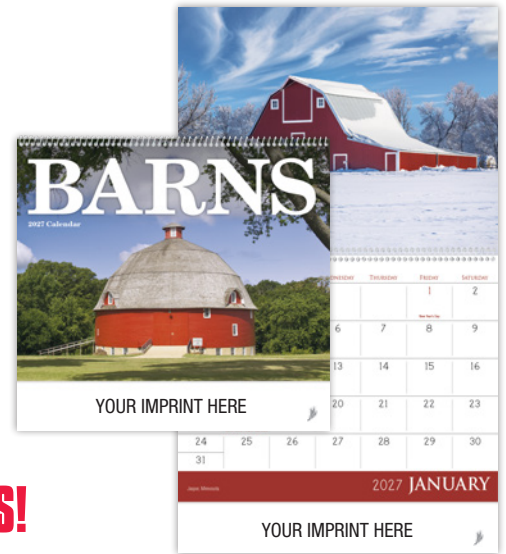
## 2027 CALENDAR PROGRAM



No. 1117  
**Country Memories**  
by Dave Barnhouse  
Size Open: 11" x 18.5"  
Size Closed: 11" x 10.25"  
Dave Barnhouse's nostalgic artwork pays tribute to small town life all year long.  
©Dave Barnhouse. Courtesy of MHS Licensing.



No. 1700  
**Barns**  
Size Open: 11" x 18.5"  
Size Closed: 11" x 10.25"  
The character and history of barns resonates with people everywhere.



## TWELVE MEMORABLE IMAGES!



No. 1851  
**Antique Tractors**  
Size Open: 11" x 18.5"  
Size Closed: 11" x 10.25"  
The history and restoration of beautiful, antique tractors is sure to impress tractor enthusiasts everywhere.



# GUARANTEED LOWEST PRICE 888-869-6334





# BEST GRAPHICS



**No. 1900**  
**American West**  
by Tim Cox  
Size Open: 11" x 18.5"  
Size Closed: 11" x 10.25"  
Experience a cowboy's life through Tim Cox's handsome artwork.



**No. 1857**  
**Antique Trucks**  
Size Open: 11" x 18.5"  
Size Closed: 11" x 10.25"  
Classic and powerful antique trucks get the job done with style. Information about each featured truck is included.



**No. 1850**  
**Muscle Cars**  
Size Open: 11" x 18.5"  
Size Closed: 11" x 10.25"  
Notable facts along with bold images of favorite fast cars make a powerful impression all year long.



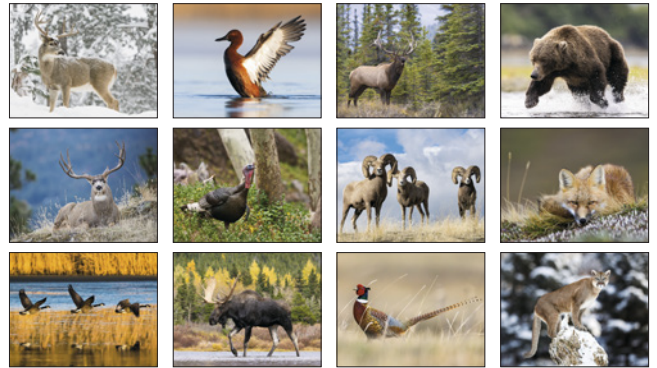
**GUARANTEED LOWEST PRICE 888-869-6334**



# BEST GRAPHICS



No. 1806  
**Sportsman**  
Size Open: 11" x 18.5"  
Size Closed: 11" x 10.25"  
Popular game animals combined with Wright's guide to the best fishing days keeps outdoor enthusiasts interested all year long.



## ALL CALENDARS HAVE NEW PICTURES FOR 2026



No. 4152  
**American Splendor Pocket**  
Size Open: 8" x 13"  
Size Closed: 8" x 8"  
Marvelous scenery from across the United States captures attention. Reverse collated for storing items all year.



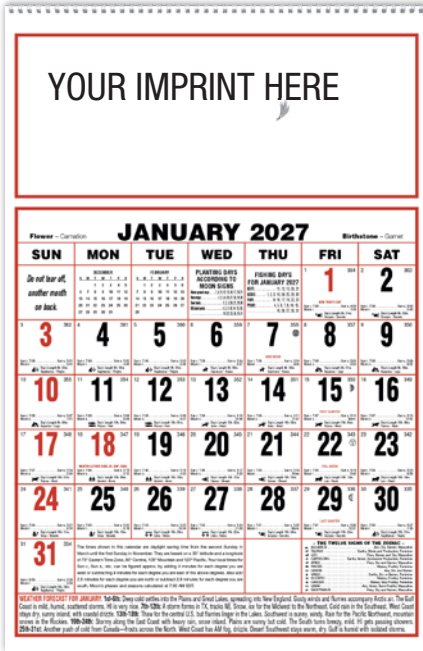
**The Old Farmer's Almanac Weather Watchers Calendar**  
Size Open: 10.5" x 18.25"  
Size Closed: 10.5" x 8"  
Amazing weather photos and some fascinating weather related information.



# GUARANTEED LOWEST PRICE 888-869-6334



# BEST GRAPHICS

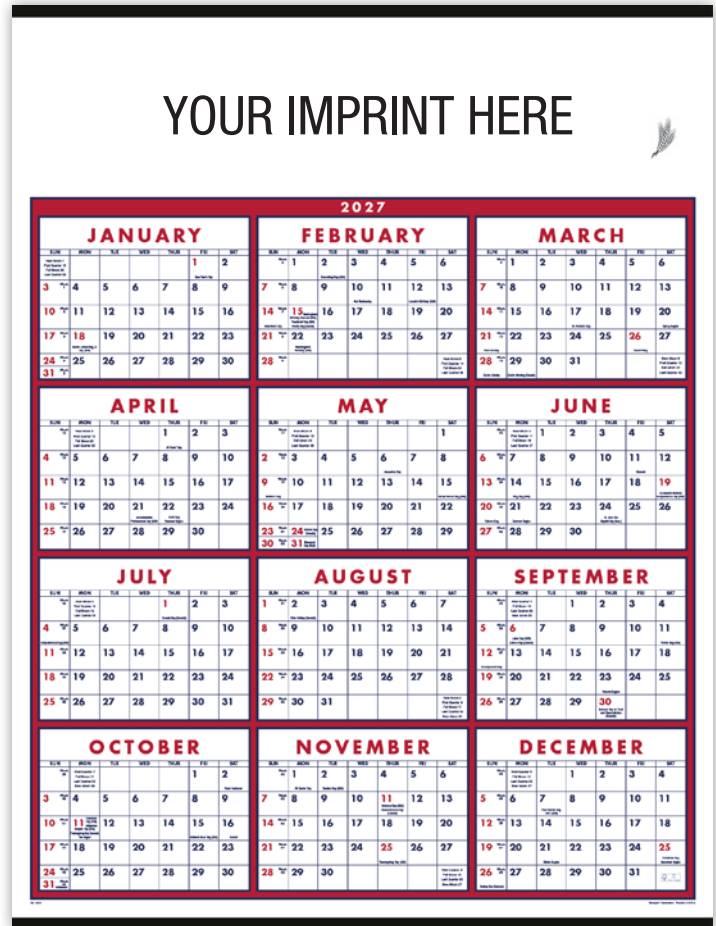


No. 6701

## Large Almanac (6-Sheet)

Size: 11" x 17"

This large almanac calendar has everything: regional weather forecasts; Wright's guide to best fishing days; sunrise, sunset, and moonrise times; planting days according to moon signs; zodiac information; and Julian dates.



No. 6203

## Span-A-Year

Size: 22" x 29"

With a large imprint area, this calendar has maximum ad impact. The FSC® label means that the materials used for this product come from well-managed FSC®-certified forests and other controlled sources.



No. 6106

## Decorator Memo

(Tan)

Size: 18" x 25"

Large and easy to read with a huge amount of space for writing each day. Due to background tint, imprint color other than black may not print true to color.

# GUARANTEED LOWEST PRICE 888-869-6334



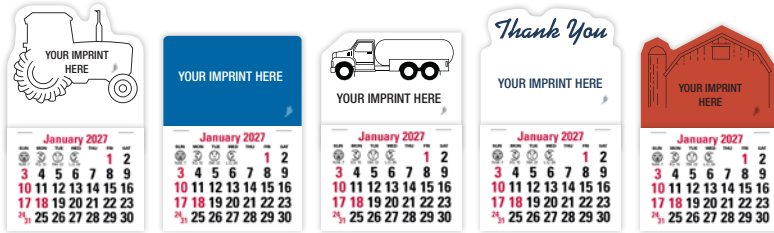
# BEST GRAPHICS



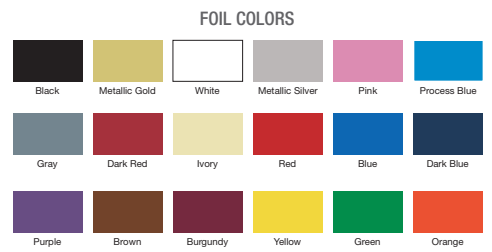
**No. V7871**  
**4C Press-N-Stick Header Standard Calendar**  
 Size: 3" x 4"  
 The 4C Press-N-Stick Header Standard Calendar displays a seasonal icon, tracks moon phases, and covers 14 months.

**No. V7870**  
**2-Color (13-month)**

Size: 3" x 4"  
 Stick ups give your message big exposure for little cost. They're versatile too: you can place them in vehicles and on refrigerators, file cabinets and more! For vinyl and foil colors see page 18.



**Other No. V7870 Stick up Shapes Available**



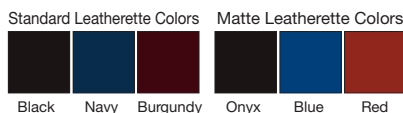
**No. 8051**  
**Classic Weekly Pocket Planner**  
 Size: 7" x 6" Open  
 3.5" x 6" Closed  
 This durable pocket planner stands up to frequent use all year. 13-month grid includes December of the previous year.



**No. 8103**  
**Classic Weekly Desk Planner**  
 Size: 11" x 8" Open  
 5.5" x 8" Closed  
 A 12-month planner that offers premium quality at a reasonable cost. Users will enjoy the ample space for writing each day.



**No. 8203**  
**Classic Monthly Planner**  
 Size Open: 17" x 11"  
 Size Closed: 8.5" x 11"  
 Brand messages have big impact every day of the year as customers use this valuable scheduling tool. 14-month grid includes December of the previous year and January of the upcoming one.



**GUARANTEED LOWEST PRICE 888-869-6334**



# BEST GRAPHICS

## No. BG4000 Custom Farm Pocket

Size: 10" x 14"

BG4000 Calendar grid is larger with more space than the No. 4000. The BG4000 and 4000 feature **12 MONTHLY POCKETS** for storing bills, receipts and more. Also includes helpful information for farmers and ranchers on the backs of the months.



No. BG4000 & No. 4000 Farm Pocket Backs



YOUR IMPRINT HERE



All BG4000 Custom Farm Pockets can ship after Sept. 1, 2026



4101 Recipe Pocket Back

## No. 4102 Farm Pocket

Size: 8" x 11"

Features monthly pockets for storing bills, receipts, and notes. Also includes helpful farm and household tips on the back of each month.



YOUR IMPRINT HERE



4102 Farm Pocket Back



**PROVIDE YOUR OWN PICTURE TO CUSTOMIZE YOUR POCKET CALENDAR ON ALL 3 POCKET STYLES**



YOUR IMPRINT HERE

## No. 4101 Recipe Pocket

Size: 8" x 11"

Features a convenient storage pocket each month. Includes a delicious recipe and helpful household hints on the back of each month.

## CHOOSE FROM THESE TIP-ON PICTURES OR PROVIDE YOUR OWN



K701 Mt. Baker-Snoqualmie National Forest



K702 Portland Head Light



K703 Sunset Splendor



K704 Autumn Splendor



K705 Covered Bridge



K706 Autumn Barn



K707 Winter Barn



K708 Summer Barn



K709 1951 Oliver 66



K710 Horse



K711 Holsteins



K712 Herefords



K713 Angus



K714 Piglets



K715 Rottweiler Puppy



K716 Kitten



K725 Wines



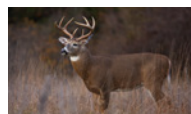
K727 Fruits & Vegetables



K729 Bountiful Harvest



K734 Not Long Till Spring



K735 White-Tailed Deer



K738 America

# GUARANTEED LOWEST PRICE 888-869-6334



# BEST GRAPHICS

BG4402

## Custom Weekly Memo

Size: 7" x 13"

A sturdy mount and spiral-bound pages make this a durable advertising choice. The back of the grids contain recipes, a listing of holidays and anniversaries, and both farm and home reference pages. Addition of 12 months at a glance on the bottom of the BG4402 contributes to this calendar being one of our most popular styles.

All BG4402 Custom Calendars can ship anytime after September 1st 2026.



YOUR IMPRINT HERE



Cover



No. 4402

## Full-Color Weekly Memo

Size: 7" x 13"

A sturdy mount and spiral-bound pages make this a durable advertising choice. The back of the grids contain recipes, a listing of holidays and anniversaries, and both farm and home reference pages.



Rural mount



Autumn mount



Mountain mount



12 Months at a Glance

# GUARANTEED LOWEST PRICE 888-869-6334



# BEST GRAPHICS

## Custom BG4427 Weekly Memo With 12 Months At A Glance

Size: 7" x 13"

A sturdy mount makes this memo a durable advertising choice. The back of the grids contain recipes, a listing of holidays and anniversaries, and both farm and home reference pages. Addition of 12 months at a glance on the bottom of the BG4427 contributes to this calendar being one of our most popular styles.

All BG4427 Custom Calendars can ship anytime after September 1st 2026.



### Calendar feature...

- Season's Greetings top sheet on each calendar.
- Back pages containing many important updated facts for farm, home and office.
- Designed to retain past weeks by turning spiral-bound pages over a hanging rod where they lay flat behind the pad are easily referred to.
- Sturdy mount board with plastic hole for hanging.
- Plus room for daily memos/notes.

Shown with White Mount - additional mount choices available at an additional charge.



12 Months at a Glance

# GUARANTEED LOWEST PRICE 888-869-6334



# BEST GRAPHICS

## 2027 BEST VALUE CALENDARS



No. 7001 *Style: Spiral*  
 No. 7201 *Style: Stapled*  
**Landscapes of America**  
 Size Open: 11" x 18.5"  
 Size Closed: 11" x 10.25"  
 A 13-month calendar featuring beautiful American landscapes.



No. 7020 *Style: Spiral*  
 No. 7220 *Style: Stapled*  
**Baby Farm Animals**  
*Style: Stapled*  
 Size Open: 11" x 18.5"  
 Size Closed: 11" x 10.25"  
 Everyone appreciates heartwarming images of barnyard babies.



## NEW PICTURES FOR 2026



No. 7047 *Style: Spiral*  
 No. 7247 *Style: Stapled*  
**Agriculture**  
 Size Open: 11" x 18.5"  
 Size Closed: 11" x 10.25"  
 Celebrate the beauty and pride of country life across America with 13-months of breathtaking imagery.



No. 6702  
**Scenic Almanac**  
 Size Open: 11" x 18.5"  
 Size Closed: 11" x 10.25"  
 A weather watcher's delight! Includes: regional weather forecasts; Wright's guide to the best fishing days; sunrise, sunset and moonrise times; planting days according to moon signs; zodiac information; and Julian dates. Note: Photos are the same as #7247 Agriculture.



### LOWEST PRICE GUARANTEED!

## ALL BEST VALUE CALENDARS ARE STAPLED, FOR SPIRAL ADD \$0.15 ea



# BEST GRAPHICS

## 2027 BEST VALUE CALENDARS



**No. 7013 Style: Spiral**  
**No. 7213 Style: Stapled**  
**Laughing It Up!**  
 Style: Stapled  
 Size Open: 11" x 18.5"  
 Size Closed: 11" x 10.25"  
 13 months of Jim Hunt's humorous cartoons capture the joys of family life.



**No. 7009 Style: Spiral**  
**No. 7209 Style: Stapled**  
**The Saturday Evening Post**  
 Size Open: 11" x 18.5"  
 Size Closed: 11" x 10.25"  
 Classic artwork from The Saturday Evening Post makes a great backdrop for any ad on this 13-month calendar.



Saturday Evening Post Illustrations  
 ©SEPS. Licensed by Curtis Licensing,  
 Indianapolis, Indiana. All rights reserved.

The average number of printed calendars per household is **2.08.**



**No. 7028 Style: Spiral**  
**No. 7228 Style: Stapled**  
**Motivations**  
 Style: Stapled  
 Size Open: 11" x 18.5"  
 Size Closed: 11" x 10.25"  
 Impress and inspire for 13 months with dynamic imagery and motivational quotes.



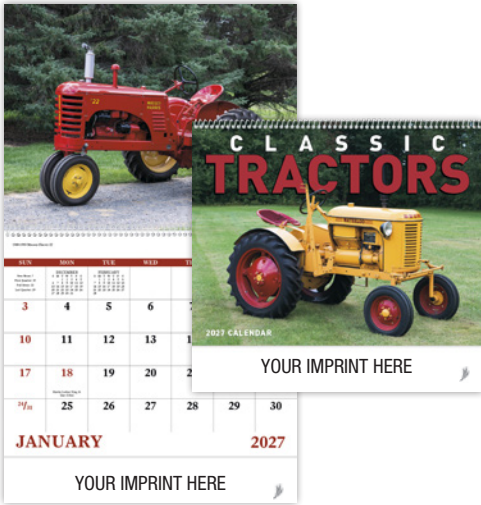
**LOWEST PRICE GUARANTEED!**

**ALL BEST VALUE CALENDARS ARE STAPLED, FOR SPIRAL ADD \$0.15 ea**

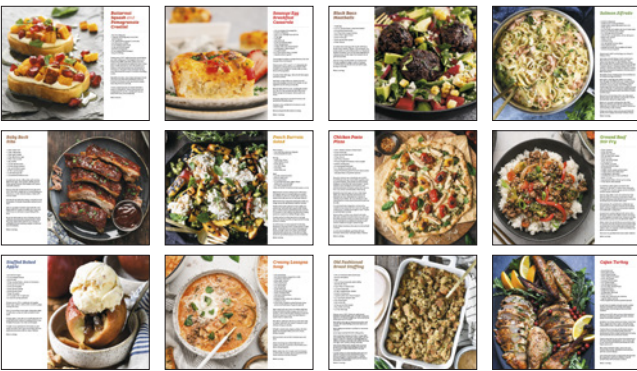


# BEST GRAPHICS

## 2027 BEST VALUE CALENDARS



No. 7030 *Style: Spiral*  
No. 7230 *Style: Stapled*  
**Classic Tractors**  
Size Open: 11" x 18.5"  
Size Closed: 11" x 10.25"  
Fascinating restored tractors cultivate brand messages every day with this 13-month calendar.



No. 7031 *Style: Spiral*  
No. 7231 *Style: Stapled*  
**Delicious Dining**  
Size Open: 11" x 18.5"  
Size Closed: 11" x 10.25"  
Add spice to brand messages with this 13-month calendar featuring savory recipes.



73% of people intend to purchase a new calendar in the next 12 months. A free one would be an appreciated gift.



No. 7033 *Style: Spiral*  
No. 7233 *Style: Stapled*  
**Monkey Mischief**  
Size Open: 11" x 18.5"  
Size Closed: 11" x 10.25"  
Funny monkeys deliver 13 months of laughs.



**LOWEST PRICE GUARANTEED!**

**ALL BEST VALUE CALENDARS ARE STAPLED, FOR SPIRAL ADD \$0.15 ea**



# BEST GRAPHICS

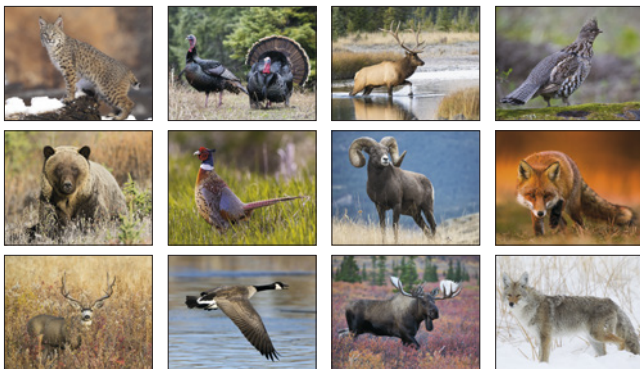
## 2027 BEST VALUE CALENDARS



No. 7037 *Style: Spiral*  
 No. 7237 *Style: Stapled*  
**Treasured Trucks**  
 Size Open: 11" x 18.5"  
 Size Closed: 11" x 10.25"  
 13 classic trucks deliver your message all year.



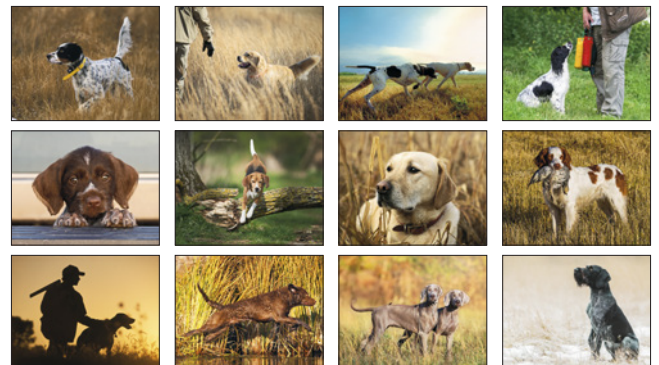
No. 7007 *Style: Spiral*  
 No. 7207 *Style: Stapled*  
**Puppies & Kittens**  
 Size Open: 11" x 18.5"  
 Size Closed: 11" x 10.25"  
 These adorable images of puppies and kittens will truly connect with your customers.



No. 7063 *Style: Spiral*  
 No. 7263 *Style: Stapled*  
**Wildlife Portraits**  
 Size Open: 11" x 18.5"  
 Size Closed: 11" x 10.25"  
 13 months of wildlife images keep your advertising message out there for an entire year.



No. 7090 *Style: Spiral*  
 No. 7290 *Style: Stapled*  
**Sporting Dogs**  
 Size Open: 11" x 18.5"  
 Size Closed: 11" x 10.25"  
 This 13-month calendar captures the adventure, energy, and loyalty that sporting dogs represent.



**ALL BEST VALUE CALENDARS ARE STAPLED, FOR SPIRAL ADD \$0.15 ea**



# BEST GRAPHICS

## 2027 BEST VALUE CALENDARS



No. 7069 *Style: Spiral*  
 No. 7269 *Style: Stapled*  
**Celebrate America**  
 Size Open: 11" x 18.5"  
 Size Closed: 11" x 10.25"  
 Express your patriotic spirit with this 13-month calendar.



No. 7071 *Style: Spiral*  
 No. 7271 *Style: Stapled*  
**Western Frontier**  
*Style: Stapled*  
 Size Open: 11" x 18.5"  
 Size Closed: 11" x 10.25"  
 The western frontier comes to life in this 13-month calendar featuring Wayne Cooper's artwork.



89% of people who receive a promotional calendar are likely to use it.



No. 7005 *Style: Spiral*  
 No. 7205 *Style: Stapled*  
**Muscle Thunder**  
 Size Open: 11" x 18.5"  
 Size Closed: 11" x 10.25"  
 Powerful muscle cars deliver ad messages fast on this 13-month calendar.



**LOWEST PRICE GUARANTEED!**

**ALL BEST VALUE CALENDARS ARE STAPLED, FOR SPIRAL ADD \$0.15 ea**







*Best Graphics, has specialized in printing services for the agriculture industry since 1984!*

## YOU HAVE MORE TO DO THAN WORRY ABOUT YOUR PRINTING NEEDS

### REASONS TO BUY FROM US

- Dependable Quality Service – satisfying customers is our goal
- Quality Printing – skilled personnel with more than 25 years experience
- Up-To-Date Equipment – printing with satisfaction guaranteed
- Monthly Calls – checking with customers each month about printing needs
- Artwork stored – customers’ logos kept in organized computer system
- Promotions – watch for promotions on different forms during the year

Agris Software Forms	AgTrax Forms
Solution Software Forms	Custom Forms
Mid-State Software Forms	Special Order Items

### ANNUAL PROMOTIONS

<b>10% off</b> Laser Forms	January-February
<b>10% off</b> Promotional Products	March
<b>10% off</b> Scale Tickets	April-May
<b>10% off</b> Continuous Forms	June-July
<b>10% off</b> Envelopes	August-September
<b>10% off</b> Meter Tickets	October-November
<b>10% off</b> Promotional Products	December

Because efficient buying sometimes requires volume, we warehouse your forms at no cost, freeing up valuable space for your company. Let us work for you so you don't have to.

### CONTACT INFORMATION

**Customer Service**  
print@bestgraphicsinc.com

**toll-free: 1-888-869-6334**  
**toll-free fax: 1-888-870-6334**

